

# CERTIFICATE OF LOCATION OF GOVERNMENT CORNER

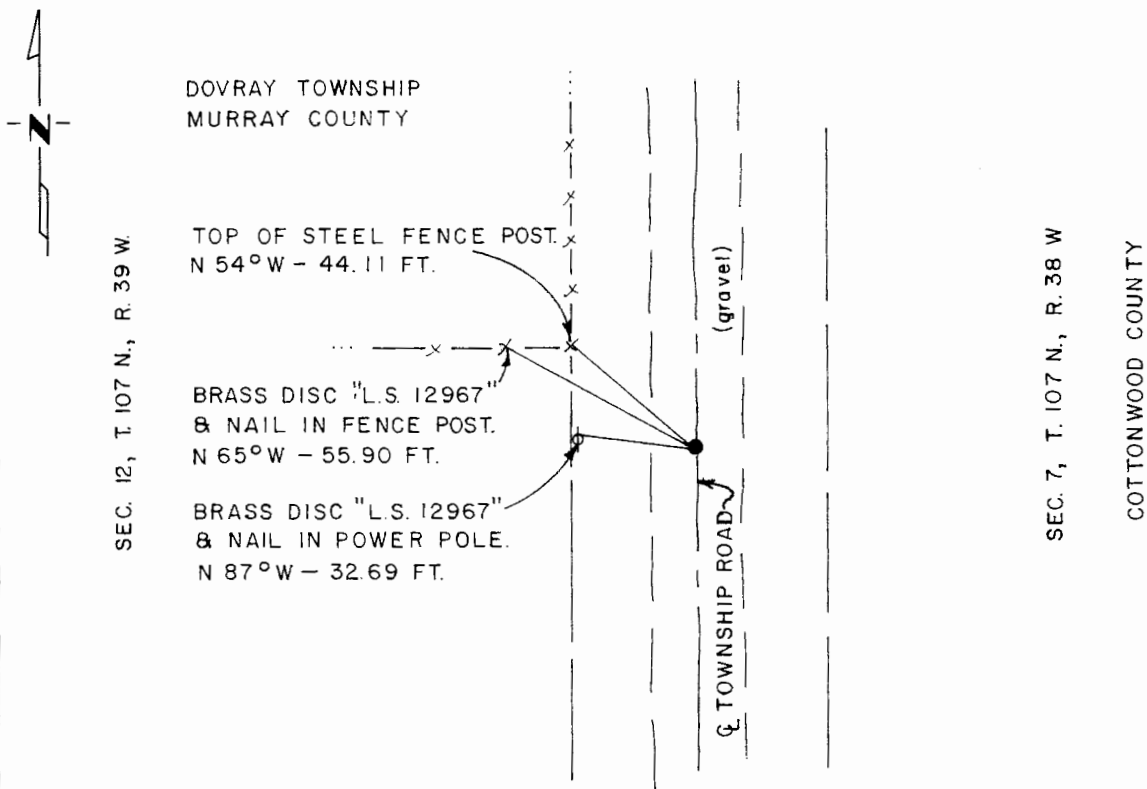
East Quarter Corner of Section 12, Township 107 N., Range 39 W., 5th P.M.

STATE OF MINNESOTA, County of Murray

At the corner location shown on the sketch:

- On Sept. 9, 1980 found a field stone, 12" x 8", 3.0'± below grade; stone is on the  
DATE  
Q of the Twmsp. Rd. & 29'± south of the fence line from the west.
  - left monument as found,  lowered monument,  removed monument (explain)
- On Sept. 9, 1980 placed a 1/2" iron reinforcing bar with "L.S. 12967" cap over  
DATE  
the field stone.

### SKETCH OF REFERENCE TIES



I hereby certify that this document and the data contained herein was prepared by me or under my direct supervision.

*Way D. [Signature]* 12/20/81  
SIGNATURE DATE

Registration No. 12967

- Land Surveyor,  Professional Engineer
- County Surveyor,  County Engineer

OFFICE OF THE COUNTY RECORDER  
 County of Murray

I hereby certify that this document was filed in the Co. Recorders office at 10 A.M. on the 18th day of February A.D., 19 82

County Recorder *William W. Ohme*

By \_\_\_\_\_, Deputy

DOCUMENT NO. \_\_\_\_\_